

PTC Series

Cable ID & Phase Tracing System

■ The PTC Series Phase Tracing System is ideal for identifying individual phases of three-phase direct buried or conduit installed cable. The PTC Series is designed to positively identify cable phases at a point where many cables come together. Such as cable used in power circuits, feeders and distribution networks. This device will also identify each individual phase in three-phase power cable.

This Phase Tracing System has three major components: a pulse transmitter, pulse detector and pick up coil. It's recommended that the cable is disconnected from any load impedance and the three-phase conductors are tied together and grounded at the far end. However, this device will operate in a satisfactory manner while connected to low impedance loads.



FEATURES

Transmitter

- ☑ **Continuously adjustable** output current
- ☑ **Low operating voltage**
- ☑ **Output current meter**
- ☑ **Input circuit breaker switch** with ON pilot light

Detector

- ☑ **High gain** transistor amplifier circuit
- ☑ **Sensitive pickup coil**
- ☑ **Rotary switch with OFF** and five sensitivity levels
- ☑ **50 division meter** to indicate relative strength of signal

BENEFITS

Effective phase identification on shielded, unshielded and lead-jacketed cable.

Complete, compact and portable system for simple and quick use in the field.

Minimal setup time and simple control panel.

APPLICATIONS

- Electrical Utilities
- Test Companies
- Petrochemical Facilities
- Facility Maintenance

TECHNICAL SPECIFICATIONS

Model Number		PTC2-*	
System Output		0-30V @ 30A	
Pulse	Shape	Square Wave (Fig. 2)	
	Width	830 msec	
Repetition Rate	Continuous	1, 2 or 3 pulses per 5 sec in A, B & C Phases (Fig. 1)	
	Intermittent	A-Phase	12 pulses per 1 min & 2 pulses per 5 sec (Fig. 2)
		B-Phase	24 pulses per 1 min & 2 pulses per 5 sec (Fig. 2)
C-Phase	Reciprocal of A and B in return leg (Fig. 2)		
Dimensions (W x H x D)	Transmitter	12 x 7.5 x 12.25 in (30.5 x 19.1 x 31.1 cm)	
	Detector	6.75 x 6 x 3.5 in (17.1 x 15.2 x 8.9 cm)	
	Pick-Up Coil	2.5 x 2.75 x 2.5 in (6.4 x 7 x 6.4 cm)	
Weight	Transmitter	Net	41 lbs (18.6 kg)
		Shipping	52 lbs (23.6 kg)
	Detector	Net	4 lbs (1.82 kg)
		Shipping	8 lbs (3.6 kg)
	Pick-Up Coil	Net	1.75 lbs (.8 kg)
		Shipping	4 lbs (1.8 kg)
Input Voltage & Frequency		* In the model number, designate 'A' for 120V/60Hz input or 'B' for 220V/50Hz input	

SYSTEM DIAGRAM

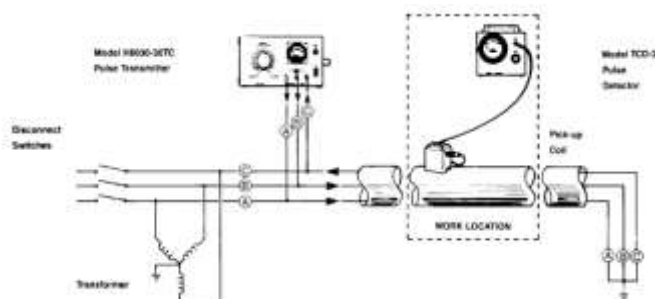


Fig. 1: Test Set-Up

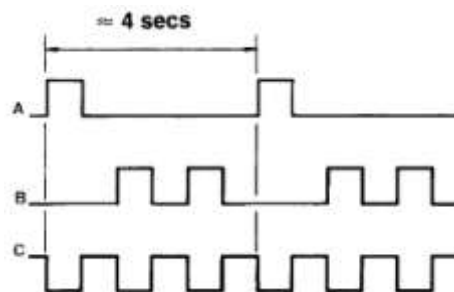


Fig. 2: Repetition Rate per Phase

OPTIONAL EQUIPMENT & ACCESSORIES

Part Number	Description	Input Voltage & Frequency
8030TC-*	Extra Transmitter (30V, 3A) & Test Lead	* In the model number, designate 'A' for 120V/60Hz input or 'B' for 220V/50Hz input
8012TC-*	Extra Transmitter (12V, 30A) & Test Lead	
TCD2A	Extra Detector	N/A
8030-LS	Extra Test Leads	
EXT-WARN-1	One year extended warranty	

OFFICES:

Europe
Haefely Test AG
Birsstrasse 300
4052 Basel
Switzerland

☎ + 41 61 373 4111
☎ + 41 61 373 4912
✉ sales@haefely.com

China

Haefely Test AG Representative Beijing Office
8-1-602, Fortune Street
No. 67, Chaoyang Road, Chaoyang District
Beijing, China 100025

☎ +86 10 8578 8099
☎ +86 10 8578 9908
✉ sales@haefely.com.cn

North America

Hipotronics, Inc.
1650 Route 22 N
Brewster, NY 10509
United States

☎ +1 845 279 3644
☎ +1 845 279 2467
✉ sales@hipotronics.com